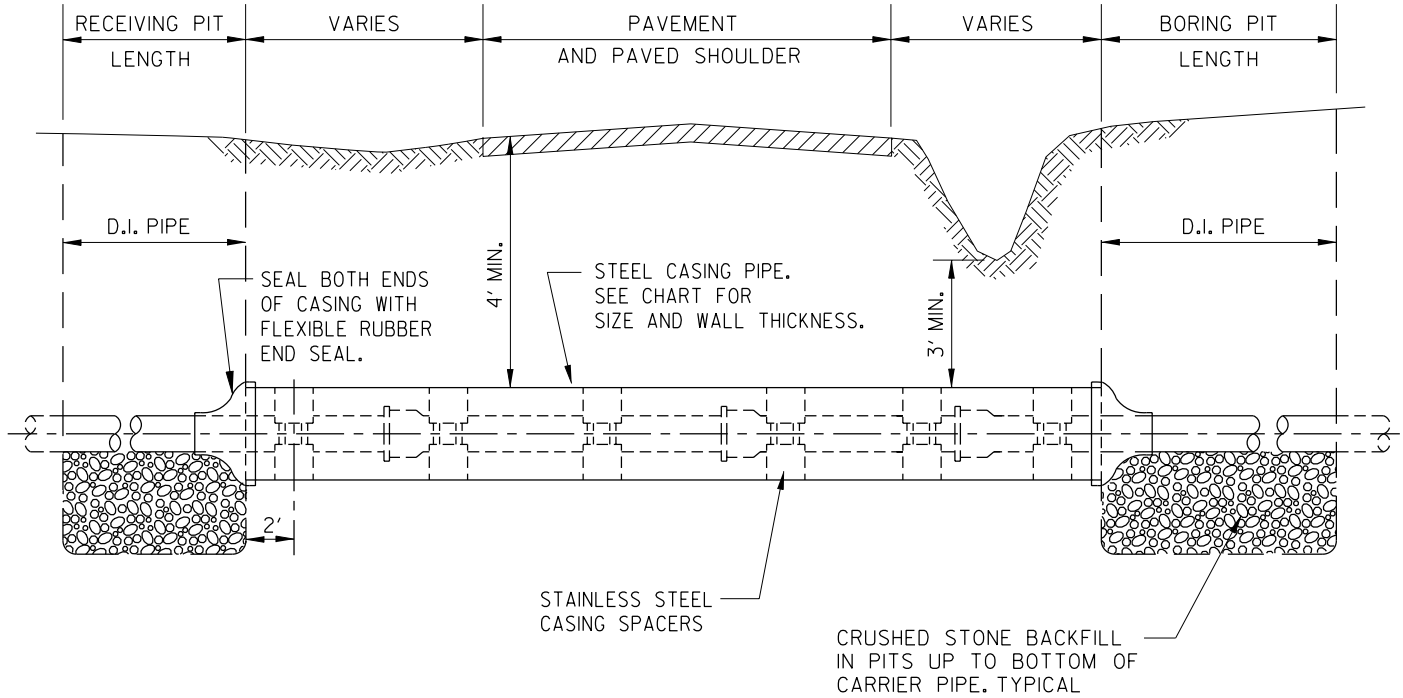


HEAVY GAUGE T-304 SS CASING SPACERS WITH PVC LINERS AND LOW FRICTION POLYMER RUNNERS MANUFACTURED BY CASCADE WATERWORKS MFG. CO. OR EQUAL. (2 REQ'D PER JOINT)

SECTION



CARRIER PIPE DIP WITH PUSH-ON JOINTS		STEEL CASING PIPE	
INSIDE DIA.	MAX. O.D.	NOMINAL DIA.	WALL THICK.
6"	8.90"	12"	0.250"
8"	11.16"	16"	0.375"
10"	13.25"	18"	0.375"
12"	15.37"	20"	0.375"
14"	17.75"	24"	0.375"
16"	19.86"	24"	0.375"
18"	22.16"	28"	0.500"
20"	24.28"	30"	0.500"
24"	28.50"	36"	0.500"

NOTES:

1. INSTALL CASING BY BORING AND JACKING, UNLESS OTHERWISE NOTED.
2. COMPLY WITH ALL REQUIREMENTS OF SPECIFICATION SECTION 02545
3. CROSSINGS ON D.O.T. RIGHT-OF-WAY SHALL COMPLY WITH ALL REQUIREMENTS OF APPLICABLE D.O.T. UTILITY ENCROACHMENT PERMIT.
4. CARRIER PIPE SHALL BE DUCTILE IRON PIPE, PUSH-ON JOINTS WITH RESTRAINED JOINTS, U.S. FIELD LOK OR EQUAL.

**CITY OF
EMERSON**

WATER & SEWER DEPARTMENT

**ROADWAY
CROSSING**

CONSTRUCTION STANDARD

DATE: 8/15/2008

REVISION DATE

REVISION DATE

REVISION DATE

REVISION DATE

STANDARD
DETAIL
NO.

5.21